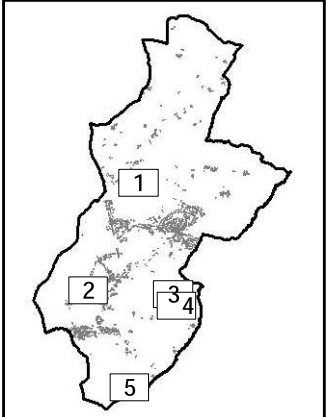
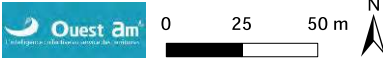


LE FUILET
1 - La Péinière



mars 2017

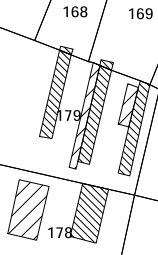


LA MAISON BLANCHE
7

81

26
LA PIMONERIE

LE FUILET
2 - La Petite Fosse à l'Ane



44

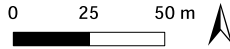


41

211

205

mars 2017

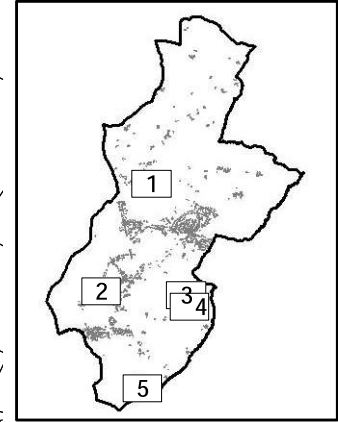


Route départementale n°143 de Saint-Christophe-la-Croix à la Boissière-sur-Evre

WK

284

la Boissière-sur-Evre



2

142

212

1124

1122

1121

1125

1128

1129

1135

224

C

4

205

211

41

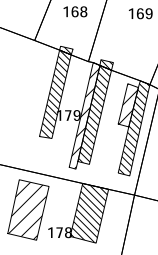
44

LA MAISON BLANCHE
7

81

26
LA PIMONERIE

LE FUILET
2 - La Petite Fosse à l'Ane



44

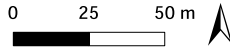


41

211

205

mars 2017

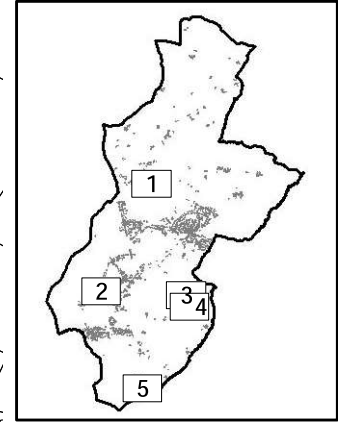


Route départementale n°143 de Saint-Christophe-la-Croix à la Boissière-sur-Evre

WK

284

la Boissière-sur-Evre



2

142

212

1124

1122

1121

1125

1128

1129

1135

224

C

4

205

211

41

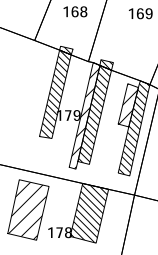
44

LA MAISON BLANCHE
7

81

26
LA PIMONERIE

LE FUILET
2 - La Petite Fosse à l'Ane



44

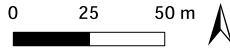


41

211

205

mars 2017

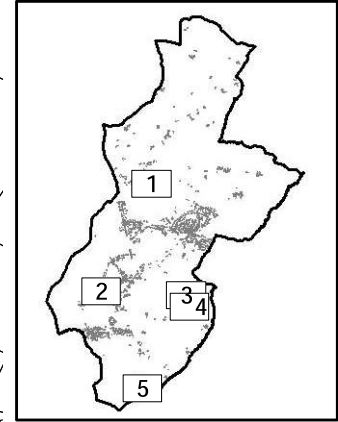


Route départementale n°143 de Saint-Christophe-la-Croix à la Boissière-sur-Evre

WK

284

la Boissière-sur-Evre



2

142

212

1124

1122

1121

1125

1128

1129

1135

224

C

4

205

211

41

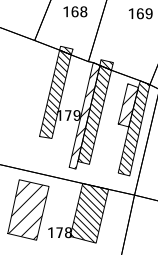
44

LA MAISON BLANCHE
7

81

26
LA PIMONERIE

LE FUILET
2 - La Petite Fosse à l'Ane



44

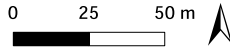


41

211

205

mars 2017

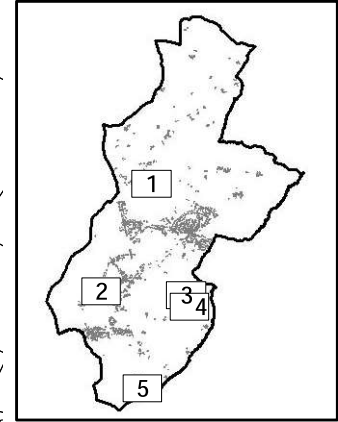


Route départementale n°143 de Saint-Christophe-la-Croix à la Boissière-sur-Evre

WK

284

la Boissière-sur-Evre



2

142

212

1124

1122

1121

1125

1128

1129

1135

224

C

4

205

211

41

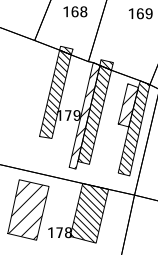
44

LA MAISON BLANCHE
7

81

26
LA PIMONERIE

LE FUILET
2 - La Petite Fosse à l'Ane



44

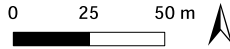


41

211

205

mars 2017

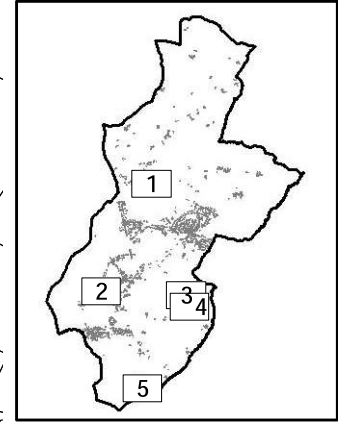


Route départementale n°143 de Saint-Christophe-la-Croix à la Boissière-sur-Evre

WK

284

la Boissière-sur-Evre



2

142

212

1124

1122

1121

1125

1128

1129

1135

224

C

4

205

211

41

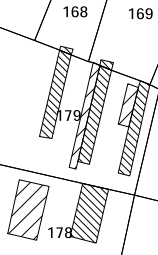
44

LA MAISON BLANCHE
7

81

26
LA PIMONERIE

LE FUILET
2 - La Petite Fosse à l'Ane



44

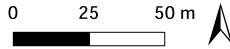


41

211

205

mars 2017

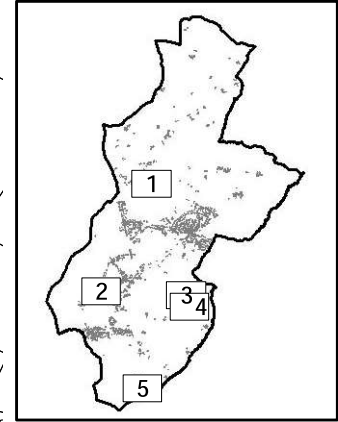


Route départementale n°143 de Saint-Christophe-la-Croix à la Boissière-sur-Evre

WK

284

la Boissière-sur-Evre



2

142

212

1124

1122

1121

1125

1128

1129

1135

224

C

4

205

211

41

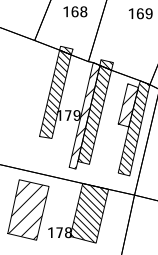
44

LA MAISON BLANCHE
7

81

26
LA PIMONERIE

LE FUILET
2 - La Petite Fosse à l'Ane



44

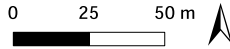


41

211

205

mars 2017

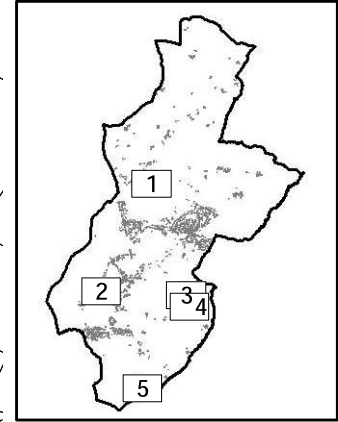


Route départementale n°143 de Saint-Christophe-la-Croix à la Boissière-sur-Evre

WK

284

la Boissière-sur-Evre



2

142

212

1124

1122

1121

1125

1128

1129

1135

224

C

4

205

211

41

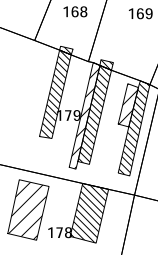
44

LA MAISON BLANCHE
7

81

26
LA PIMONERIE

LE FUILET
2 - La Petite Fosse à l'Ane



44

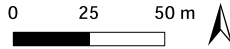


41

211

205

mars 2017

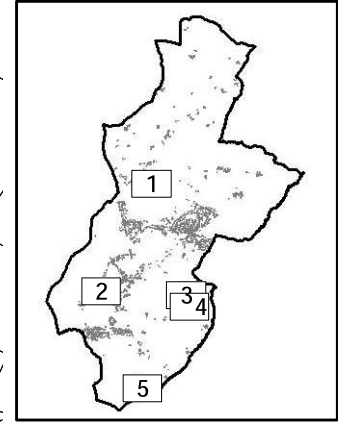


Route départementale n°143 de Saint-Christophe-la-Croix à la Boissière-sur-Evre

WK

284

la Boissière-sur-Evre



2

142

212

1124

1122

1121

1125

1128

1129

1135

224

C

4

205

211

41

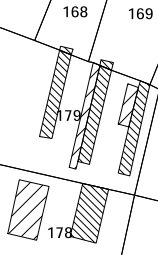
44

LA MAISON BLANCHE
7

81

26
LA PIMONERIE

LE FUILET
2 - La Petite Fosse à l'Ane



44

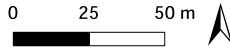


41

211

205

mars 2017

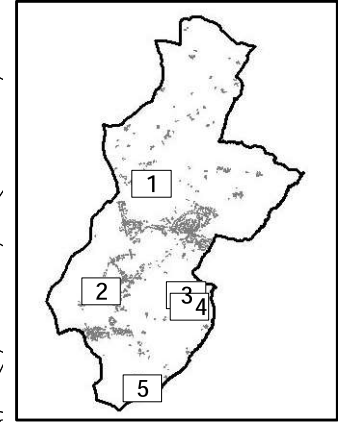


Route départementale n°143 de Saint-Christophe-la-Croix à la Boissière-sur-Evre

WK

284

la Boissière-sur-Evre



2

142

212

1124

1122

1121

1125

1128

1129

1135</

LA PETITE BLANDINIÈRE
65

L'AULNAIE VALENCON

LE FUILET
4 - Le Chêne Besson

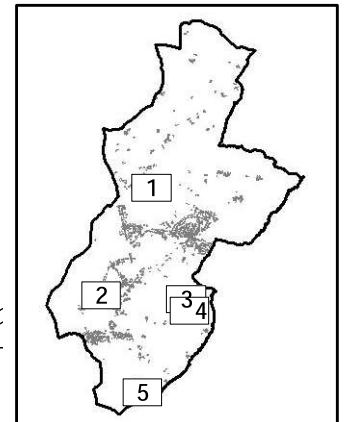
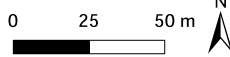
LA PIE
122

LE CHENE BESSON

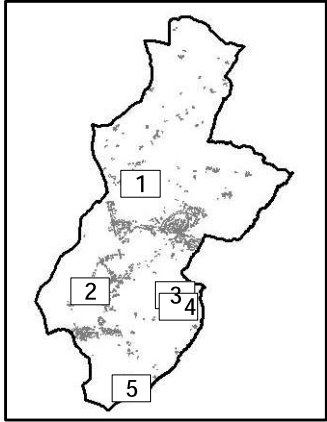
MOULIN DE L'AULNAIE

LA PIE
WM 247

mars 2017



LE FUILET
5 - La Garenne



mars 2017

